

**Setting the Strategic  
Commissioning Priorities  
and  
Measuring our  
Performance as a City**

# Aim of the Presentation

---

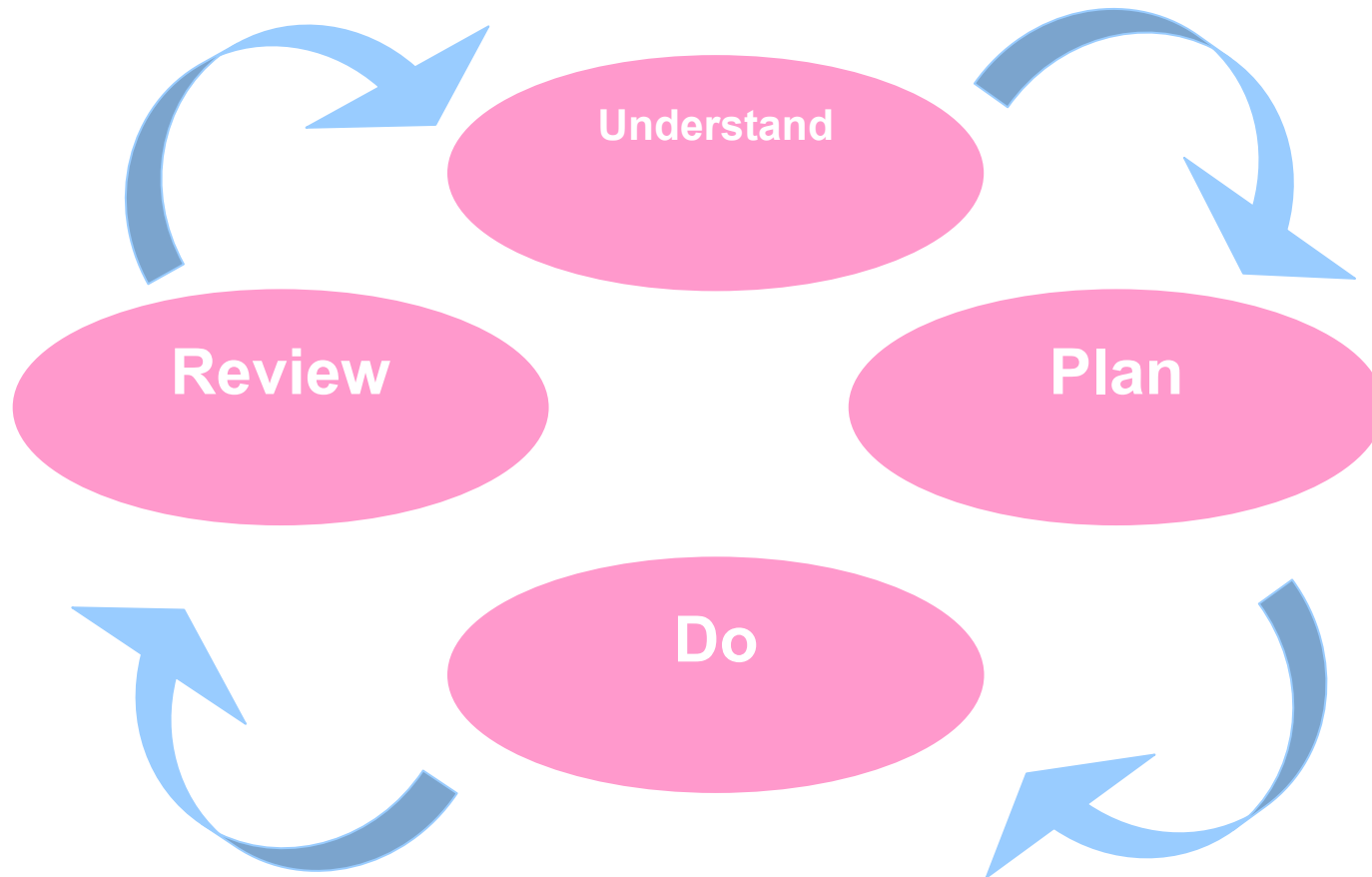
Present and discuss:

- State of City Report
- Strategic commissioning priorities
- Performance & Risk Management Framework and key components:
  - BHCC organisational report
  - City performance plan
- Relationship to OSC

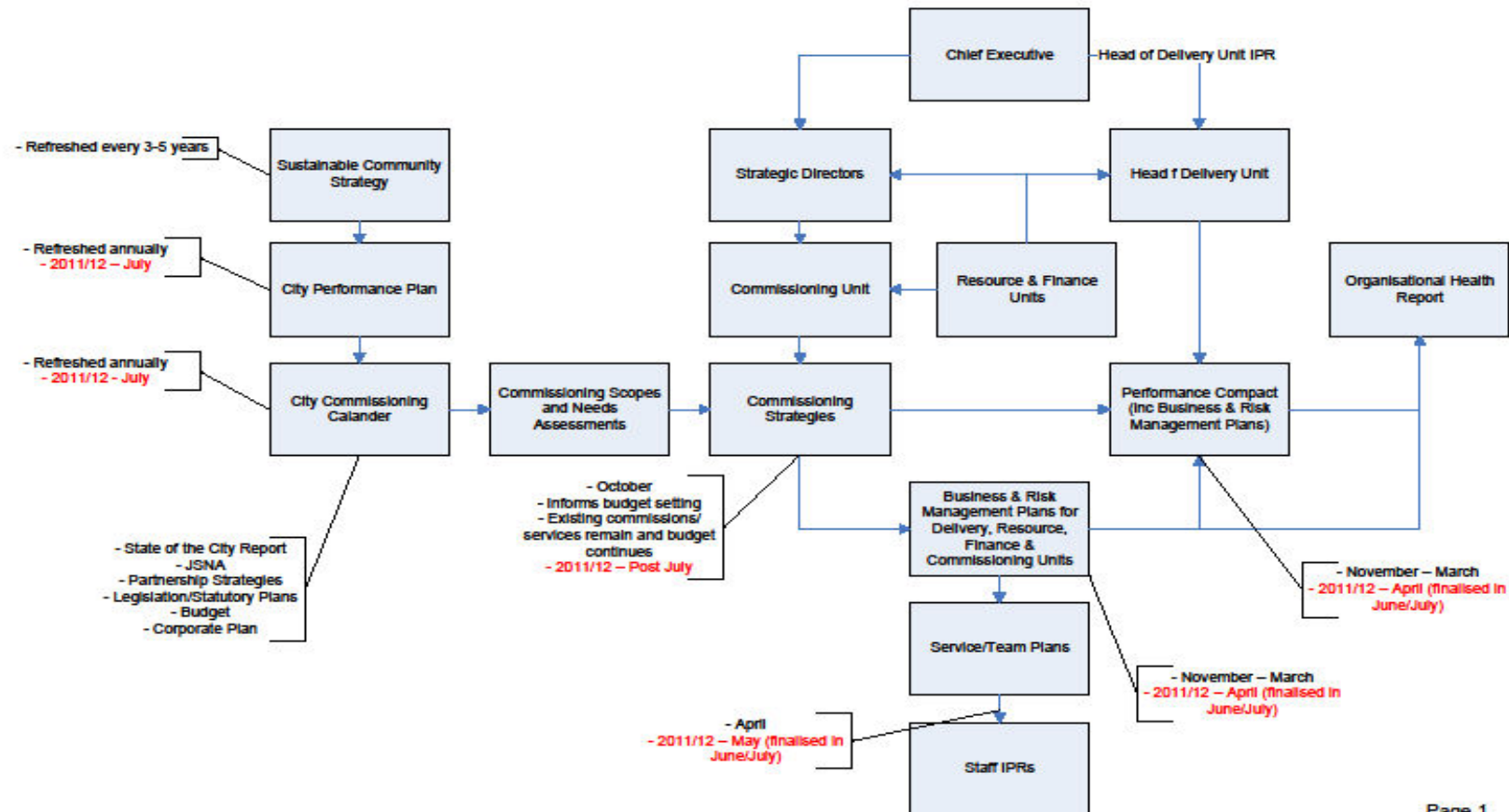


# The Commissioning Cycle

---



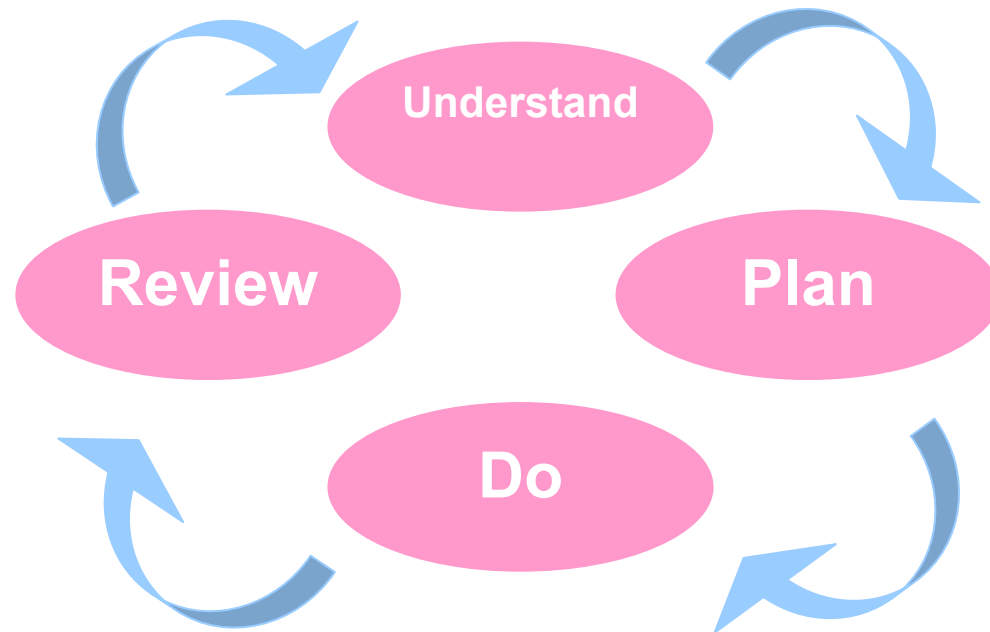
# Framework



# The Commissioning Cycle: 'Understand'

---

## Understand



# What is the State of the City report?

---

- The **big picture**...not the minutiae.
- **Benchmark** so can see change.
- An **objective** profile of Brighton and Hove; no evaluative statements or recommendations.
- A **snapshot of the city** in terms of its characteristics and key issues.
- Aim is to create a **shared sense of priorities**.
- It will form part of the evidence base to support decisions about future **commissioning priorities**.
- It will be useful for a variety of audiences including planners, strategists and commissioners, service providers in statutory, community and voluntary sectors and advocates working across the city.



# Key Areas

---

About our city	Our population
Our diversity	Our older people
Our children & young people	Our neighbourhoods
Our involvement	Our environment
Our transport& infrastructure	Our homes
Our health	Our behaviours
Our culture & leisure	Our crime & disorder profile
Our business & enterprise	Our employment & skills
Our investment & development	Our resilience



# Other information on the city

---

- Needs assessment programme
  - The first stage of each commission
  - Focus guided by commissioning scope
  - Pulls together all available evidence (stats; projections; customer info; profiling; financial; service mapping; evidence of what works; community voice; professional views)
- Needs assessments will drill down into areas outlined in the State of the City report and agreed as city priorities





# State of the City report formats

- Plan to produce
  - an **e-version of the full report, with supporting data**
  - a **public facing summary available in hard and electronic (pdf) formats**
- The summary will be professionally designed and styled using place branding, including infographics, as per the recent Domestic Violence summary.

State of the City Report - May 2011

of Year 10 and 11 students report that they smoke on a regular basis. 24 per cent of Year 8 & 10 pupils report ever having taken drugs, compared to nine per cent nationally.

### Our neighbourhoods

- **Over half of our residents, 55 per cent (139,600 people), live in some of the 40 per cent most deprived areas of England in 2010.** Our city is ranked the 66th most deprived authority out of 326 in England using the 2010 Indices of Multiple Deprivation
- **12 per cent of the city's areas (19 out of 164) are in the ten per cent most deprived in England.** These 19 local areas typically have a high proportion of social housing & a higher than average number of working age people on incapacity benefit. They are also likely to have a high proportion of one or more of the following: lone parents, carers or children aged less than 16 years.
- Two of our 164 areas are in the most deprived one per cent of areas in England; one in East Brighton & one in Queen's Park.
- Two of the city's areas, both in Hollingbury & Stanmer, are in the 20 per cent most deprived in England for all seven domains the Index of Deprivation consists of.

12% of the city's areas (19 out of 164) are in the ten per cent most deprived in England.

4

State of the City Report - May 2011

### Our environment

- **The voice of young people across Brighton & Hove is represented through the Brighton & Hove Youth Council and various other specialist groups.** The youth council comprises elected and nominated residents aged eight to 19 who represent the diversity of young people in the city, being drawn from youth groups, schools and colleges across the city. The 2010-12 campaign of the youth council is to address the following issues for the benefit of local communities:
  - access to services including transport and cost
  - community engagement and making a positive contribution by working together to address issues.
- **Our city is bounded by the sea & the newly designated South Downs National Park,** constraining our ability to expand but providing a wealth of leisure opportunities.
- **If everyone lived & consumed resources like the average person in Brighton & Hove we would need 3.5 planets to support us.** The land required per resident to sustain their current lifestyles was 5.14 (2006) global hectares per person in 2006, a reduction from the 2004 footprint of 5.72.
- **City Carbon Dioxide (CO2) emissions from homes, industry & commerce & transport fell by 6.1 per cent over the last three years measured.** In the UK Carbon Dioxide (CO2) is responsible for 85 per cent of our contribution to global warming.
- **Poor air quality as measured by Nitrogen Dioxide (NO2) levels exceeded target levels at nearly two thirds of sites monitored in the city.** Air quality is a key environmental factor that affects the health of the population. Road vehicles are the greatest contributing factor to poor air quality in Brighton & Hove.

If everyone lived & consumed resources like the average person in Brighton & Hove we would need 3.5 planets to support us.

11



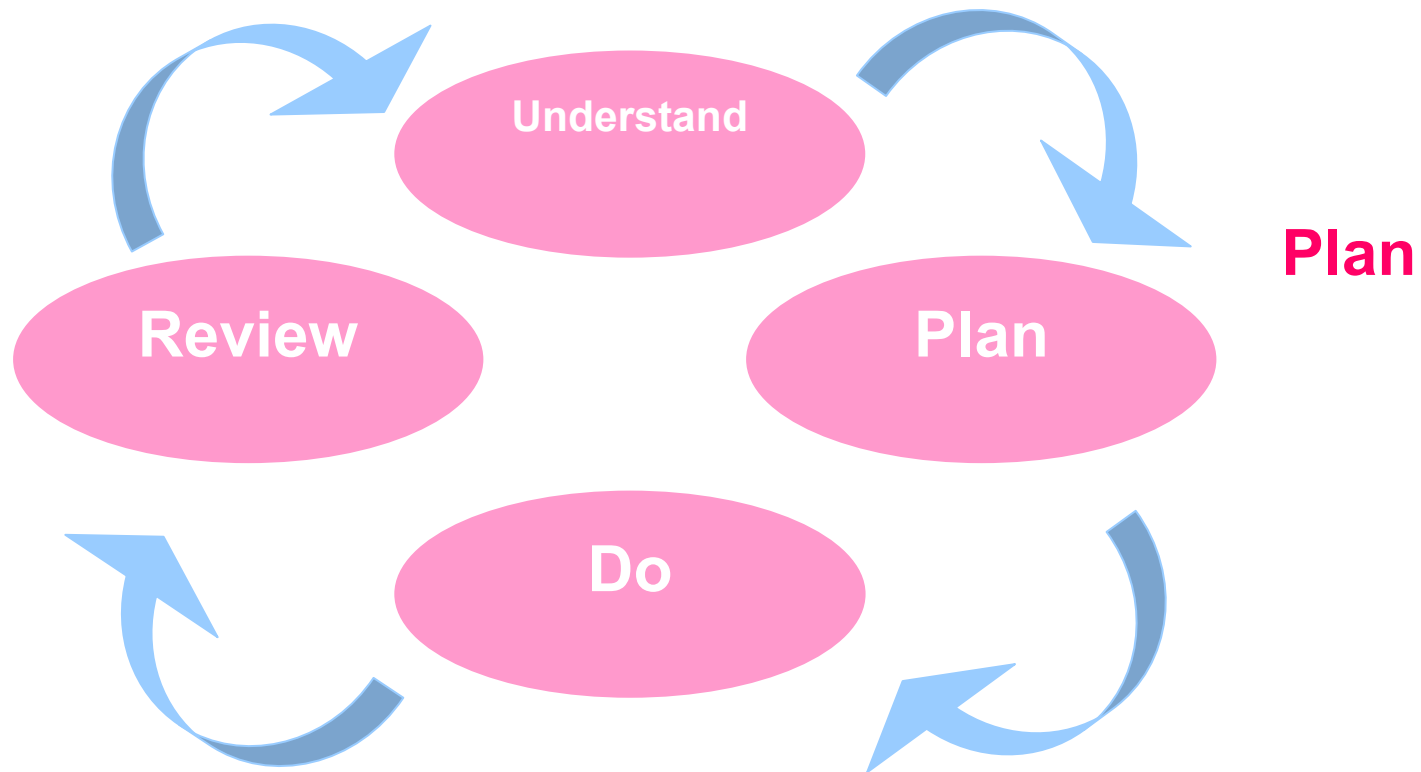
---

# Comments on State of City Report?



# The Commissioning Cycle: 'Plan'

---



# City Commissioning Priorities

---

- PSB ownership
- Indicative four year programme
- Developed by:
  - State of city report and city wide needs assessment programme
  - Sustainable Community Strategy
  - City performance plan
  - Existing partnership strategies
  - Key public sector organisational plans
  - CVSF position statements
  - Budget constraints and opportunities
  - Consultation with partnerships, third sector reps, elected member, BHCC CMT, individual key public partners
- Reviewed annually with involvement of OSC, Cabinet, PSB and LSP, family of Partnerships and Third Sector



# Indicative City Commissioning Priorities

- One planet living / Low carbon city
- Sustainable economy
- Young adults (transitional years)
- Families with complex needs
- Health inequalities



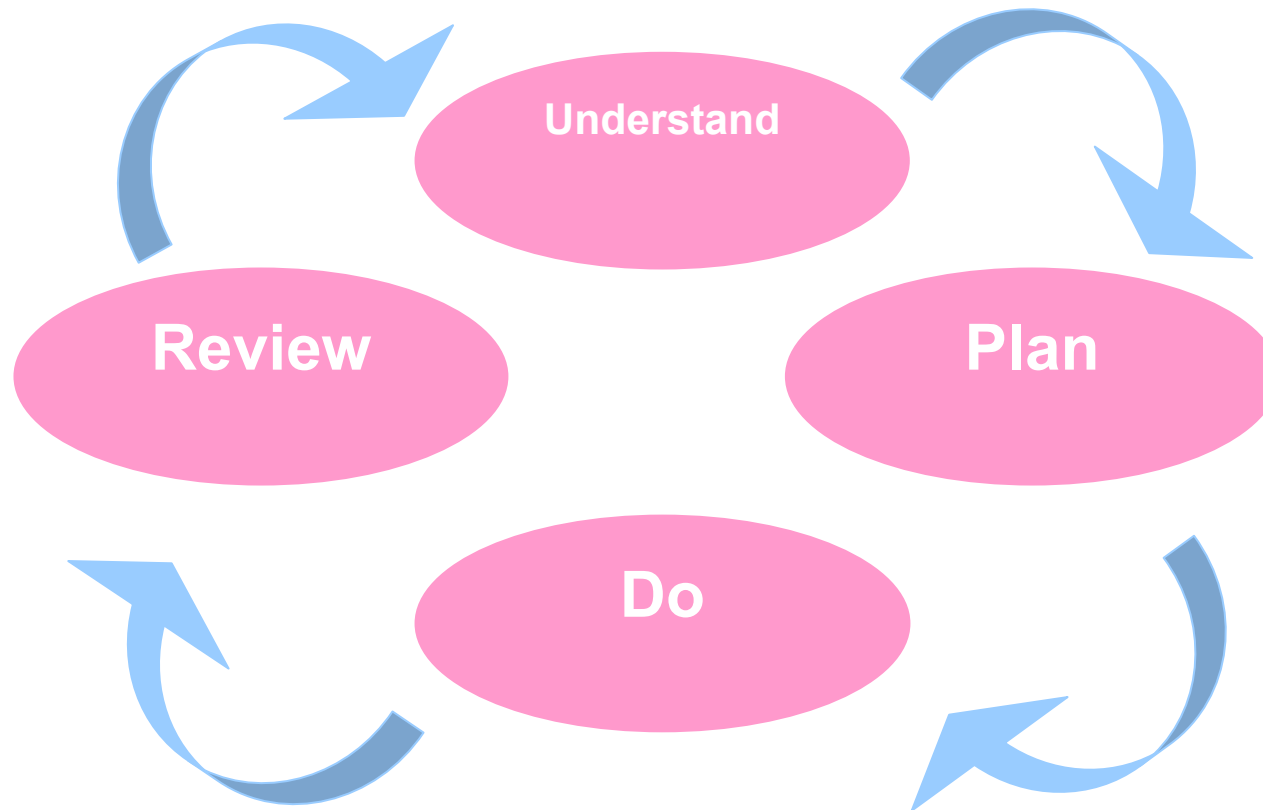
---

# Comments and Feedback on Commissioning Areas

# The Commissioning Cycle: 'Review'

---

**Review**



# Performance and Risk Framework

---

- **Consulted with OSC and Partners**
  - OSC February 2011
- **City Performance Plan**
  - how is the city doing?
- **Organisation Performance and Health**
  - how is the organisation doing?





# Outcomes Based Approach



# City Performance Plan

---

- Learn from the LAA, Nis, BVPIs
- Outcomes based approach
- Sustainable Community Strategy led
- Agreement between city partners
- Local accountability
- Risk and performance
- 2011/12 Interim Plan
- Built to be flexible and responsive
- Reported 6 monthly to: PSB, LSP, Cabinet, OSC, SLB, Residents
- Public facing version; available on-line
- Reviewed annually



# City Performance Plan

---

## Constructed from:

- Sustainable Community Strategy priorities & aims
- Outcome
- Sub-outcome
- Suite of indicators per outcome

## Partnership Engagement:

- Content developed by and responsibility of relevant partnerships.
- Targets to be negotiated and lead officers/organisations to be confirmed



---

# Comments on the City Performance Plan?

# BHCC Organisational Health Report

---

- The council's organisational health performance will be measured through a suite of indicators.
- Full suite of indicators will be reported 6 monthly to SLB, Cabinet and Overview & Scrutiny
- A set of priority indicators will be reported monthly to SLB and CMT
- Reviewed annually
- Reports made available on-line



# Key Areas

---

- Finance
- Workforce (including equality measures)
- Customer
- Process

---

# Comments on the Organisational Health Report?

# Next Steps

---

- State of city report – June Cabinet
- City performance plan – July Cabinet & PSB
- BHCC organisational health report – July Cabinet
- City commissioning priorities – July Cabinet & PSB





---

Thank you

Any further  
questions?



